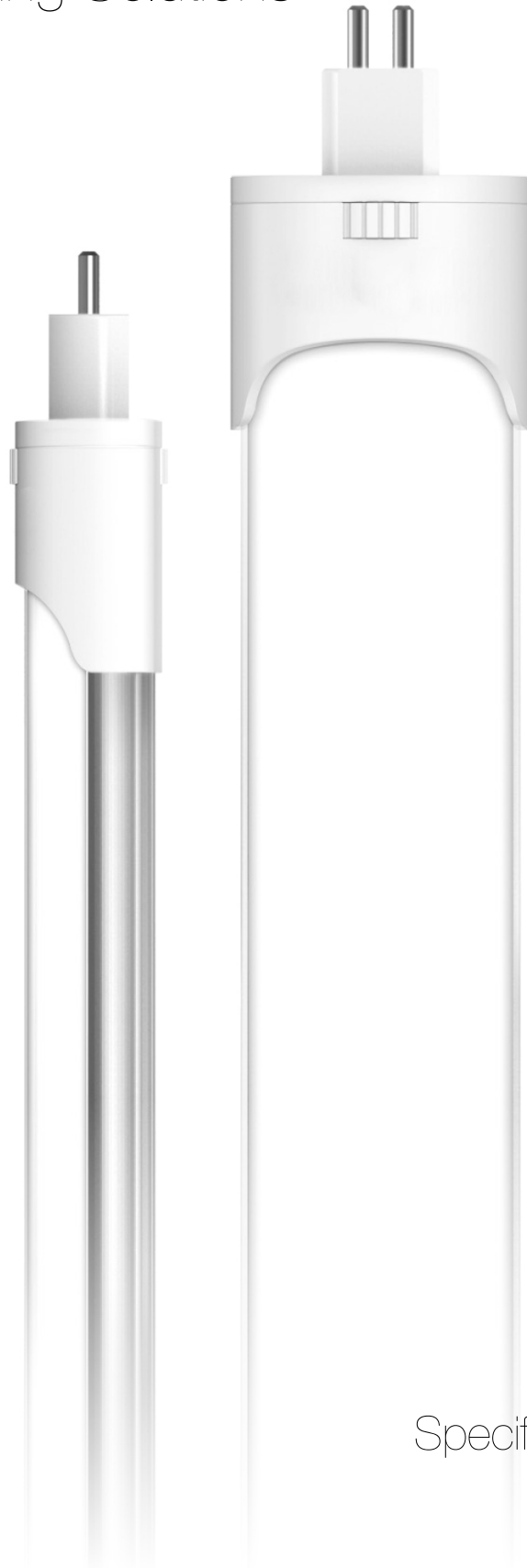


isollux™

Intelligent Lighting Solutions

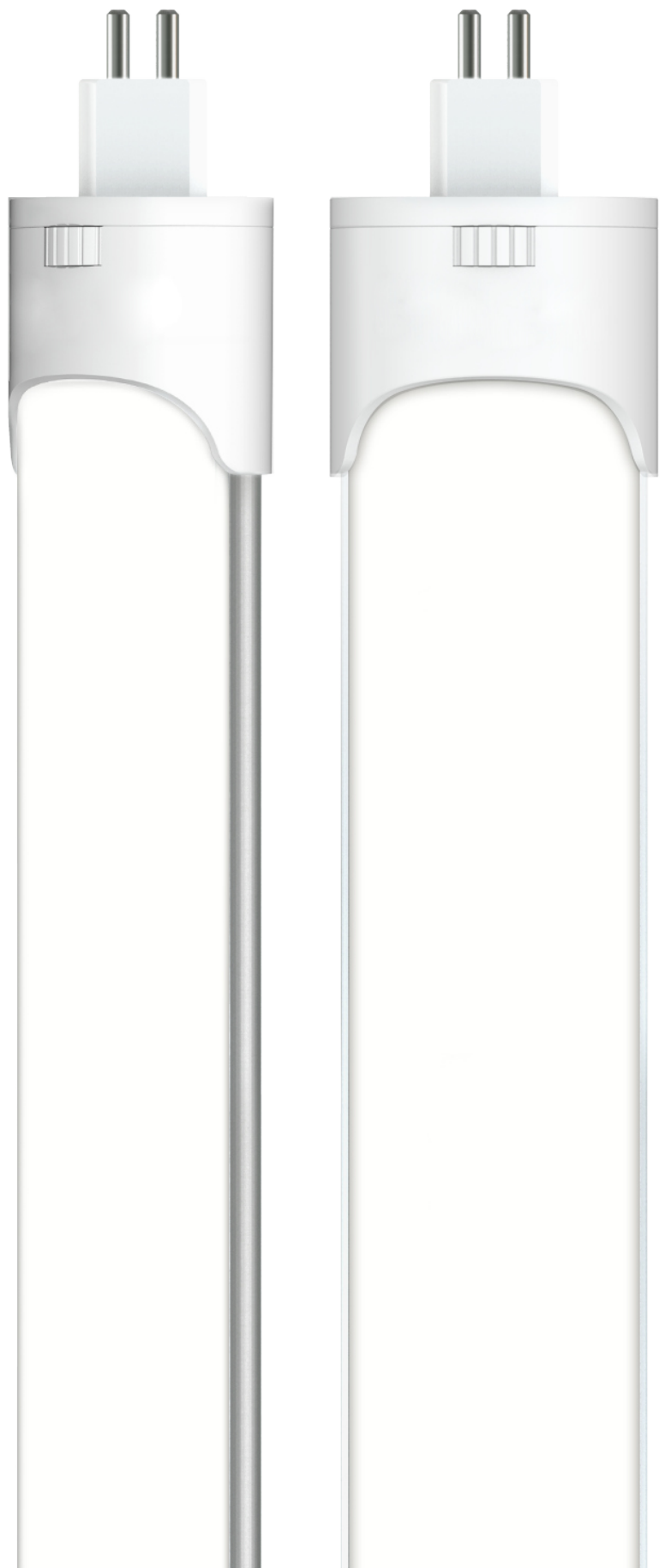


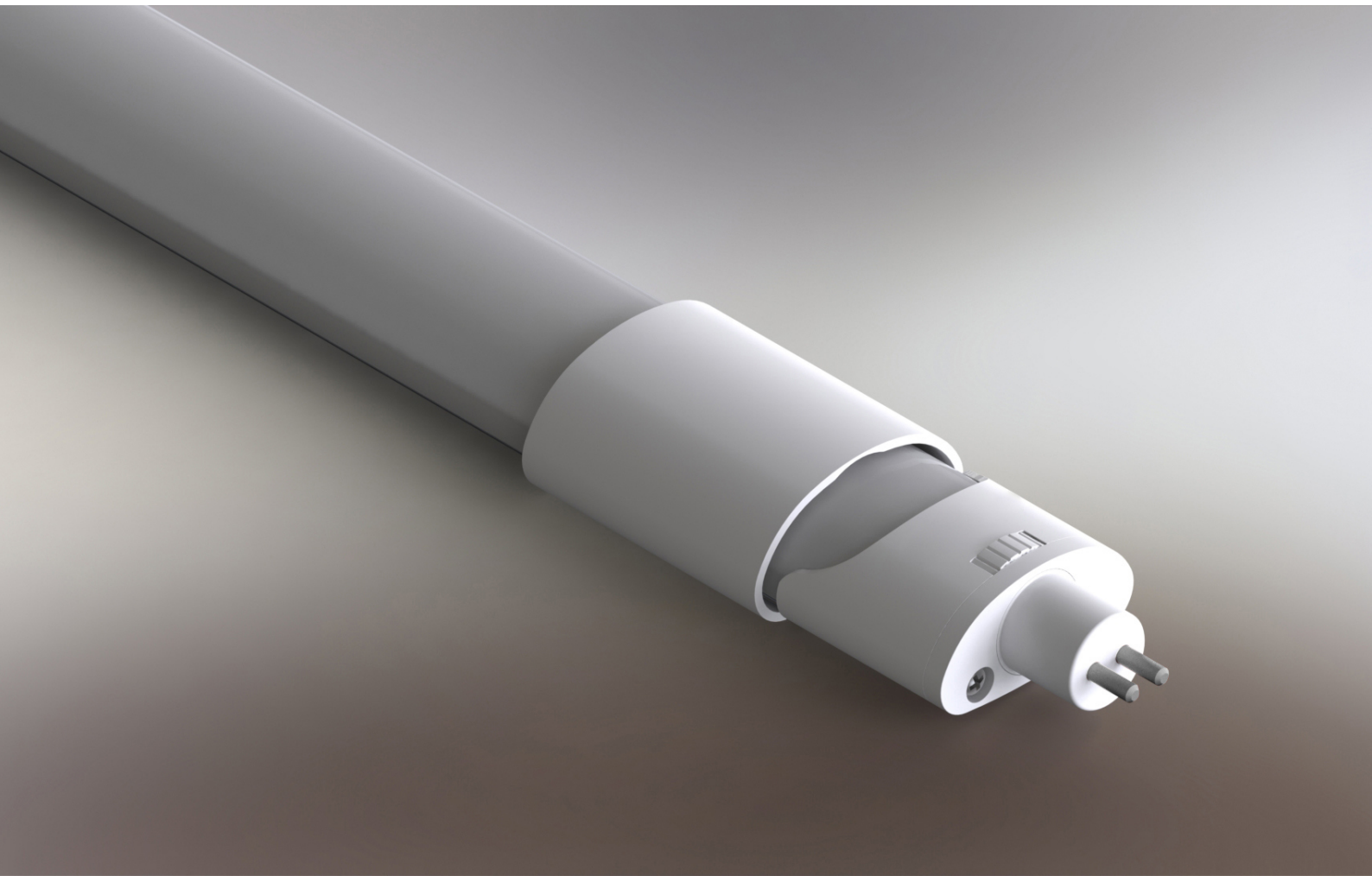
Specifier Series | **T5 LED**

A unique and ideal replacement for T5 Fluorescents

When designing the T5 LED, our engineers rejected preconceptions and focused on optimising efficiency and flexibility of a directional LED light source. The patented design features an elliptical profile with rotational hubs.

A combination that fits traditional T5 luminaries but increases the surface area of the light emitting surface, maximising uniformity and minimising glare.





Clean, simple, powerful

T5 LED features the latest Pro-Frost™ lens, which allows high light transmission without spotting, whilst the wide format reduces glare by up to 60% compared to standard T5 Fluorescent. At over 130lm/W (@ CRi 90) and 200,000hr to L70, the Isollux T5 LED is a highly effective alternative to traditional T5 fluorescent tubes. Supports dimming and flicker free drivers and is ideal for retrofit applications in both traditional T5 enclosures and backlit point of sale (POS) in supermarket cosmetic aisles, where it can be trusted to run for extended periods without maintenance.



Multiple power options

With all models feature our latest long life HE Chip technology with multiple external driver options.

The option to specify T5 LED at Re80 raises output to 150lm/W L90 100,000 Hours, performance that provides the ideal product for upgrading HO T5 Fluorescent tubes without compromising light levels and allowing one for one replacement and upgrades insitu.

600mm

10W | 1,300lm*

CRI90

900mm

15W | 1,950lm*

CRI90

1200mm

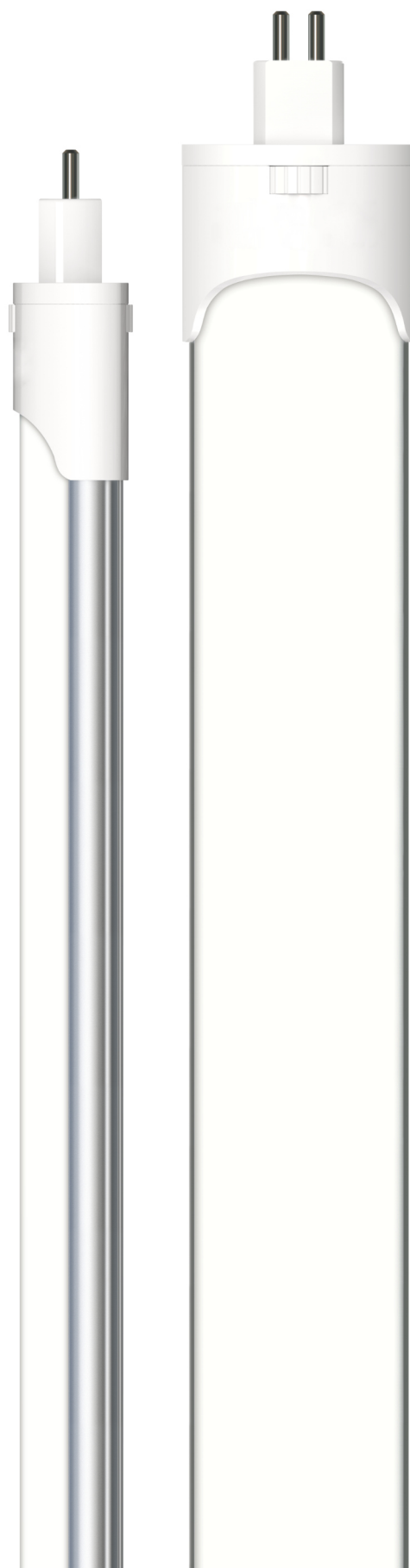
20W | 2,600lm*

CRI90

1500mm

24W | 3,120lm*

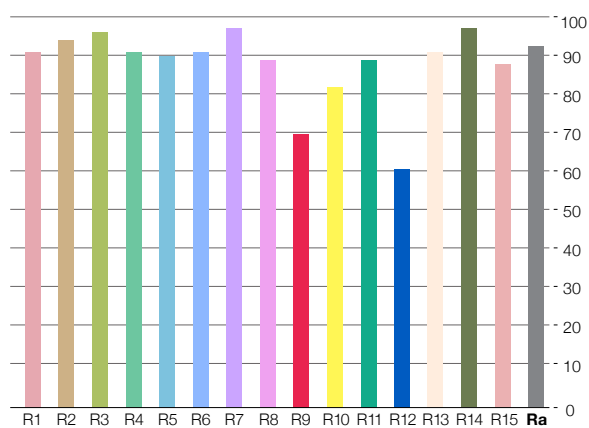
CRI90





Accurate, stable colour rendering.

The T5 LED surpasses the most stringent international colour rendering performance requirements with a standard offering of CRI (R_e) ≥93 and the power to deliver this experience even at the highest lux level requirements of quality control, retail and medical applications.

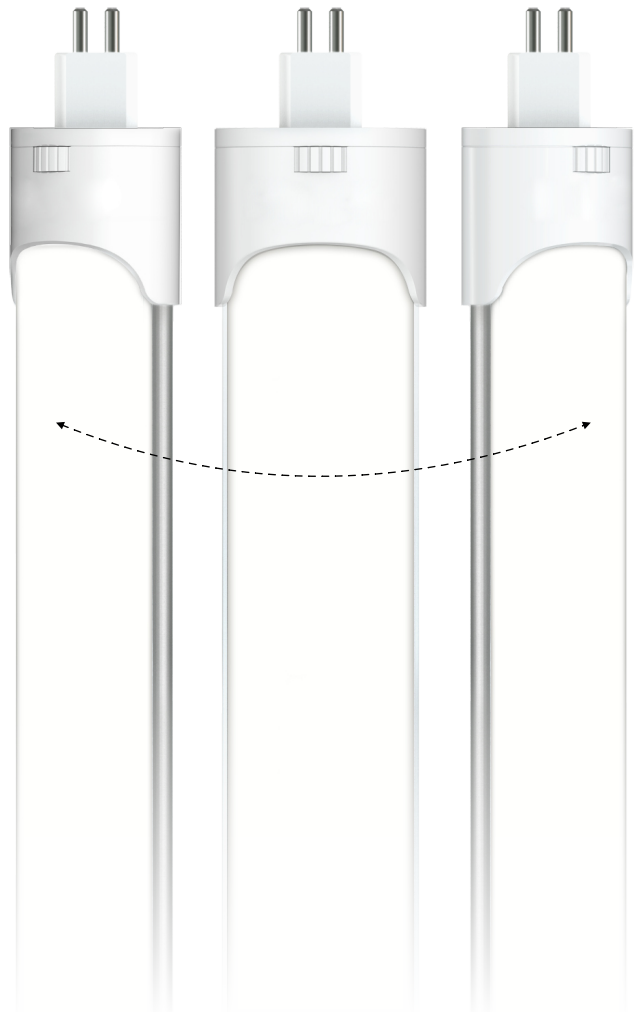


* Nominal output (lux) at Ta 25°C, based on CCT 5,000K, CRI90 @130lm/W



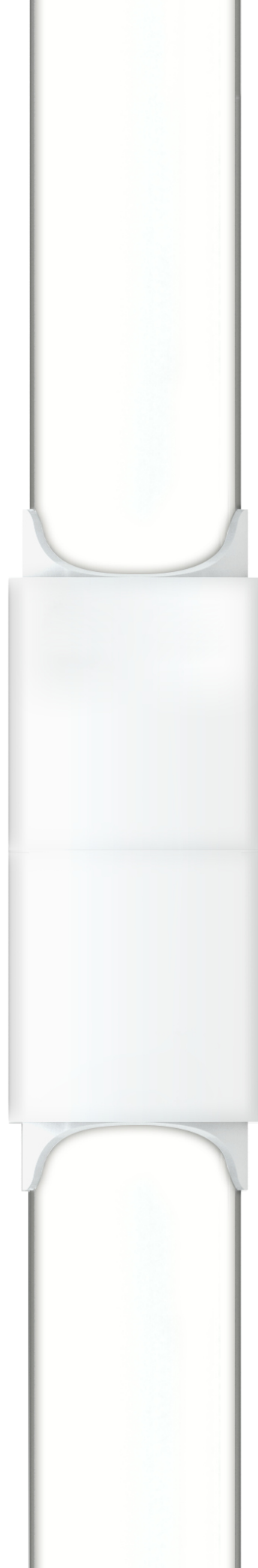
Rotational Hubs.

The T5 LED features rotating hubs, ideal for fine tuning the direction of light to deliver high levels of uniformity behind signage or broadening beam angles in commercial interiors.



Clean lines end to end.

The integrated sliding cover, extends over end caps to minimise visual clutter on end to end connection with simple access for maintenance and a hygienic, easy-clean surface for commercial applications like supermarkets and offices.

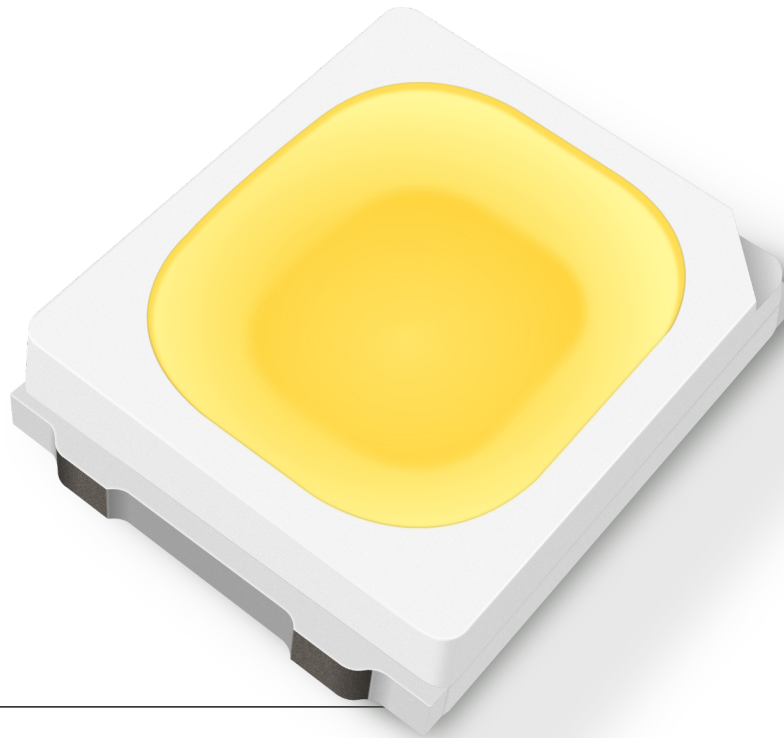


Optimised to eliminate thermal stress

A traditional T5 format offers very little surface area for the heat sink. The Isollux T5 LED's oval design provides a dramatically increased surface area, without compromising its functional application in the majority of T5 retrofit applications. The design provides ample surface area for the 6063-grade aluminium heat sink to ensure class-leading performance and longevity.



Performance that delivers greater control



HE LED Chip

176lm/W @ CRI (Re) 90

≥100,000Hrs/L90

Ra85 | Ra95 | 3000K | 4000K | 5000K | 6000K

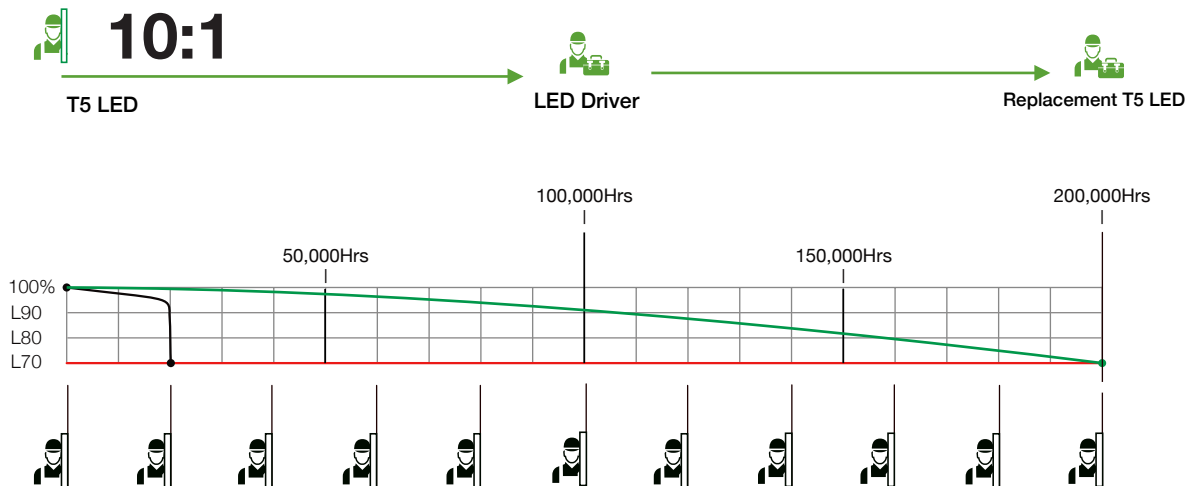
The Isollux HE LED Chip is a powerful and long-lasting dual die chipset. It delivers an incredible 176 lm/W at CRI (Re 90) while operating four times longer than industry standard with minimal losses*. The combination of L90 performance and absence of B'ratings for the fitting, provides lighting designers with the freedom to adopt tighter specification with confidence. Lowering power density and stable lux levels without the use of lighting controls.

*HE Chipset L90 Lifetime calculated using 9,000hr independent LM80 photometry report, citing zero failures, using the Energy Star TM-21 protocol. Calculations are based on ambient temperatures of 25°C.

Cost Effective and Ecologically Sound

Maintenance makes sense, financially, ecologically and practically. Our team can explain the true cost of short term thinking and help your business reduce costs and achieve a sustainable future, with regular maintenance of your fitting.

- ▶ Reduces total cost of ownership maximising ROI and NPV
- ▶ Reduces land fill, manufacturing and supply related carbon footprint by up to 1000%
- ▶ Delivers a longer practical performance life
- ▶ Supports planned and unscheduled maintenance to the maximum life of the fitting
- ▶ Minimises downtime with easily maintained and replaceable parts
- ▶ Design philosophy ensures components are easily dismantled at end of life for recycling



Typical service life of T5 Fluro Tube

A typical T5 Fluro Tube will have an expected life of 20,000 Hours. Fluro tubes are non recyclable with toxic material used in product. The Isollux T5 LED will replace up to 10 standard fluro tubes over its lifetime.

*HE Chipset L70 Lifetime calculated using 9,000hr independent LM80 photometry report, citing zero failures, using the Energy Star TM-21 protocol. Calculations are based on ambient temperatures of 25°C. With regular maintenance to keep heatsinks and vents clear from blockages. Assumes driver replacement as routine maintenance event at driver replacement at 100,000Hrs (D4i). Power tray replacement at schedule to suit customers lux requirements estimated ≥ 200,000 Hrs

T5 LED Specifications

HE Chipset

PRODUCT	PERFORMANCE			AMBIENT		INRUSH	MAX INPUT	WARRANTY*
Model Number	Output	Power	Efficiency	Min*	Max	Amps	Watts	24/7 @ max (Ta)
600mm								
T5-0600-HE-Y95-10W-EX	1,300lm	10W	130lm/W	0°C	40°C	1.6A	36W	5 YRS
T5-0600-HE-Y85-10W-EX	1,500lm	10W	150lm/W	0°C	40°C	1.6A	36W	5 YRS
900mm								
T5-0900-HE-Y95-15W-EX	1,950lm	15W	130lm/W	0°C	40°C	1.6A	36W	5 YRS
T5-0900-HE-Y85-15W-EX	2,250lm	15W	150lm/W	0°C	40°C	1.6A	36W	5 YRS
1200mm								
T5-1200-HE-Y95-20W-EX	2,600lm	20W	130lm/W	0°C	40°C	1.6A	36W	5 YRS
T5-1200-HE-Y85-20W-EX	3,000lm	20W	150lm/W	0°C	40°C	1.6A	36W	5 YRS
1500mm								
T5-1500-HE-Y95-24W-EX	3,120lm	24W	130lm/W	0°C	40°C	1.6A	36W	5 YRS
T5-1500-HE-Y85-24W-EX	3,120lm	24W	150lm/W	0°C	40°C	1.6A	36W	5 YRS

Packing and Shipping Information:

<p>T5 LED 600mm Carton Weight: 6kg Carton Dimensions: 65cm x 22cm x 23cm Units per Carton: 25</p>	<p>T5 LED 900mm Carton Weight: 8kg Carton Dimensions: 95cm x 22cm x 23cm Units per Carton: 25</p>
<p>T5 LED 1200mm Carton Weight: 10kg Carton Dimensions: 125cm x 22cm x 23cm Units per Carton: 25</p>	<p>T5 LED 1500mm Carton Weight: 12kg Carton Dimensions: 155cm x 22cm x 23cm Units per Carton: 25</p>

(Y) Correlated Colour Temperature options include: 4000°K (4) | 5000°K (5) | 6000°K (6) | Ra (CRI) Option: Ra85 (85) Ra95 (95)

(EX) External driver to be supplied separately



Contact: Chris Wheatley

Mobile: + 64 21 343 456

Telephone: + 64 9 446 0822

E.mail: chris.wheatley@isollux.com

Regional Authorised Global Partners can be found in the following locations

Sydney – Australia | Fresno – USA | Brusselbann – Belgium | Hong Kong – China | Jaingxi – China