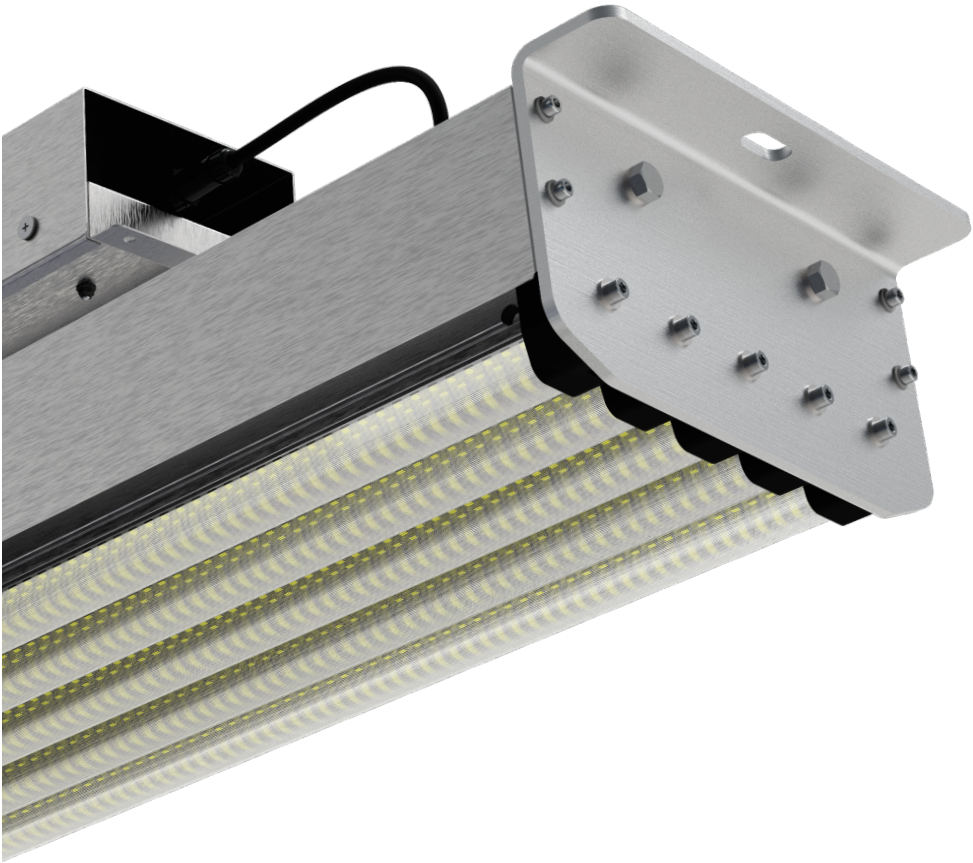


ShortBay CMR Specifier Series

PRODUCT	PERFORMANCE			AMBIENT		DRIVER	INRUSH	MAX PSU	WARRANTY	
Model Number	*	Output	Power	Efficiency	Min	Max°	Function	Amps	Type C Breaker	24/7 @ max (Ta)
4 Lite Bar										
CMR4-HE-XY-180W-ND	-(R)	25,200lm	180W	140lm/W	-40°C	30°C	Non Dim	65A	7 @ 230 Vac	5 YRS
CMR4-HE-XY-180W-DM	-(R)	25,200lm	180W	140lm/W	-40°C	30°C	0-10V	65A	7 @ 230 Vac	5 YRS
CMR4-HE-XY-180W-DA	-(R)	25,200lm	180W	140lm/W	-40°C	30°C	DALI	60A	6 @ 230 Vac	5 YRS
CMR4-HP-XY-180W-ND	-(R)	27,000lm	180W	150lm/W	-40°C	30°C	Non Dim	65A	7 @ 230 Vac	5 YRS
CMR4-HP-XY-180W-DM	-(R)	27,000lm	180W	150lm/W	-40°C	30°C	0-10V	65A	7 @ 230 Vac	5 YRS
CMR4-HP-XY-180W-DA	-(R)	27,000lm	180W	150lm/W	-40°C	30°C	DALI	60A	6 @ 230 Vac	5 YRS
5 Lite Bar										
CMR5-HE-XY-220W-ND	-(R)	30,800lm	220W	140lm/W	-40°C	30°C	Non Dim	75A	4 @ 230 Vac	5 YRS
CMR5-HE-XY-220W-DM	-(R)	30,800lm	220W	140lm/W	-40°C	30°C	0-10V	75A	4 @ 230 Vac	5 YRS
CMR5-HE-XY-220W-DA	-(R)	30,800lm	220W	140lm/W	-40°C	30°C	DALI	60A	6 @ 230 Vac	5 YRS
CMR5-HP-XY-220W-ND	-(R)	33,000lm	220W	150lm/W	-40°C	30°C	Non Dim	75A	4 @ 230 Vac	5 YRS
CMR5-HP-XY-220W-DM	-(R)	33,000lm	220W	150lm/W	-40°C	30°C	0-10V	75A	4 @ 230 Vac	5 YRS
CMR5-HP-XY-220W-DA	-(R)	33,000lm	220W	150lm/W	-40°C	30°C	DALI	60A	6 @ 230 Vac	5 YRS

(X) Correlated Colour Temperature options include: 4000°K (4) | 5000°K (5) | 6000°K (6)
(YY) Ra (CRI) Options include Ra85 (85), Ra95. (95) Example: 5,000k Ra85, XY- = 585
- (R) When reflectors* are required add -R, to end of standard code, blank when not required.
ND Non dimming (Vo to reduce output) | DM 1-10V Dimming | DA DALI

Isollux™
ShortBay CMR Specifier Series
Surface Mount with Through Ceiling Remote Driver Box



*High radiant temperatures or unexpected heat sources can potentially damage or significantly impair the performance of the luminaire. Please contact Isollux prior to installation if further information is required.

ISO-SB-CMR-INS-0721

Thank you for selecting the Isollux for your LED lighting Solution. At Isollux, we are dedicated to ensuring our products are designed to meet the challenges of commercial applications. Visit our website to discover more about this and other Isollux products.

IMPORTANT READ BEFORE INSTALLING

This product is only suitable for installation by a qualified electrical contractor. For information regarding this product or if you have any questions relating to its use, please contact Isollux LED Ltd. before attempting to install the product. It is the installer's responsibility to ensure the hanging point is suitable for the load.

INSTALLATION INSTRUCTIONS

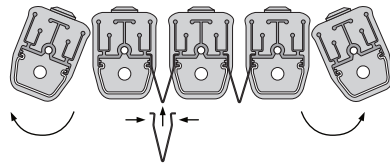
INSTRUCTIONS

- Determine fixing position, suitable fixing point and method.
- Remove product from packaging, inspect for damage during transit.
- Contact Isollux or your solution provider immediately if damage is found.
- If specified, install reflectors after the product is suspended to avoid accidental damage.
- Ensure power is disconnected prior to installing light fixture.
- The CM Series can be fixed with a bolt through suitable substrates or to beams or purlins using suitable U Bolt*
- Check the lamp is aligned and suspended securely before proceeding to the next stage.
- The side panel of the CM series may be removed to allow access to fly lead during installation.
- It is the electrical contractors responsibility to ensure the installation meets all legal requirements.
- Connect in accordance with AS/NZS 3000.
- Connect to mains power via a plug or junction box.
- Phase (Brown), Neutral (Blue) and Earth (Green and Yellow).
- Energise circuit and check operation of light.

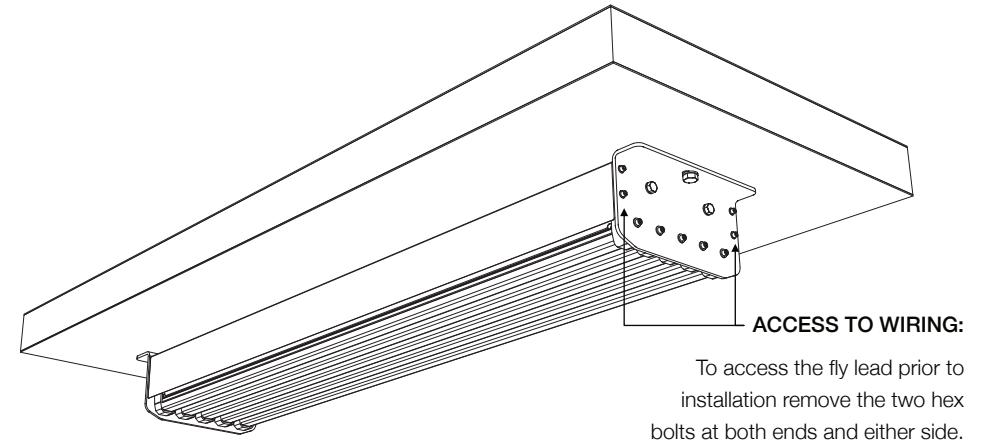
* **Note:** Bolts are not supplied as they vary between installation types and building structures

REFLECTORS

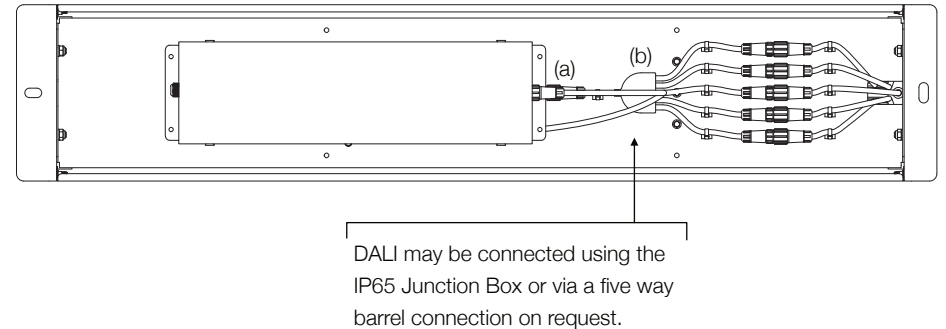
If reflectors are provided, these are easily installed between the bays by squeezing the "V" of the reflector together and easing into the gap. It is important to locate the top edge securely into the body of the heat sink (see below). Outer arrays can be rotated to broaden beam angle light output.



WIRING GUIDE



PLEASE NOTE:



WARNING:

The ShortBay CMR is supplied with a fly lead with IP65 barrel connector (a) and IP65 Junction Box (b) and to achieve a safe electrical connection it is essential that the power supply is connected in line with AS/NZS 3000 using the enclosure and with a cable that will allow a suitable seal.

If the power supply is not suitably connected the product will not meet IP65 status and should be considered for non wet/damp environments to IP20 only.

Any alterations or additions to the electrical circuits must be undertaken by a certified electrical contractor using equipment that meets the regional requirements for AU/NZS certification including electrical safety and EMC.