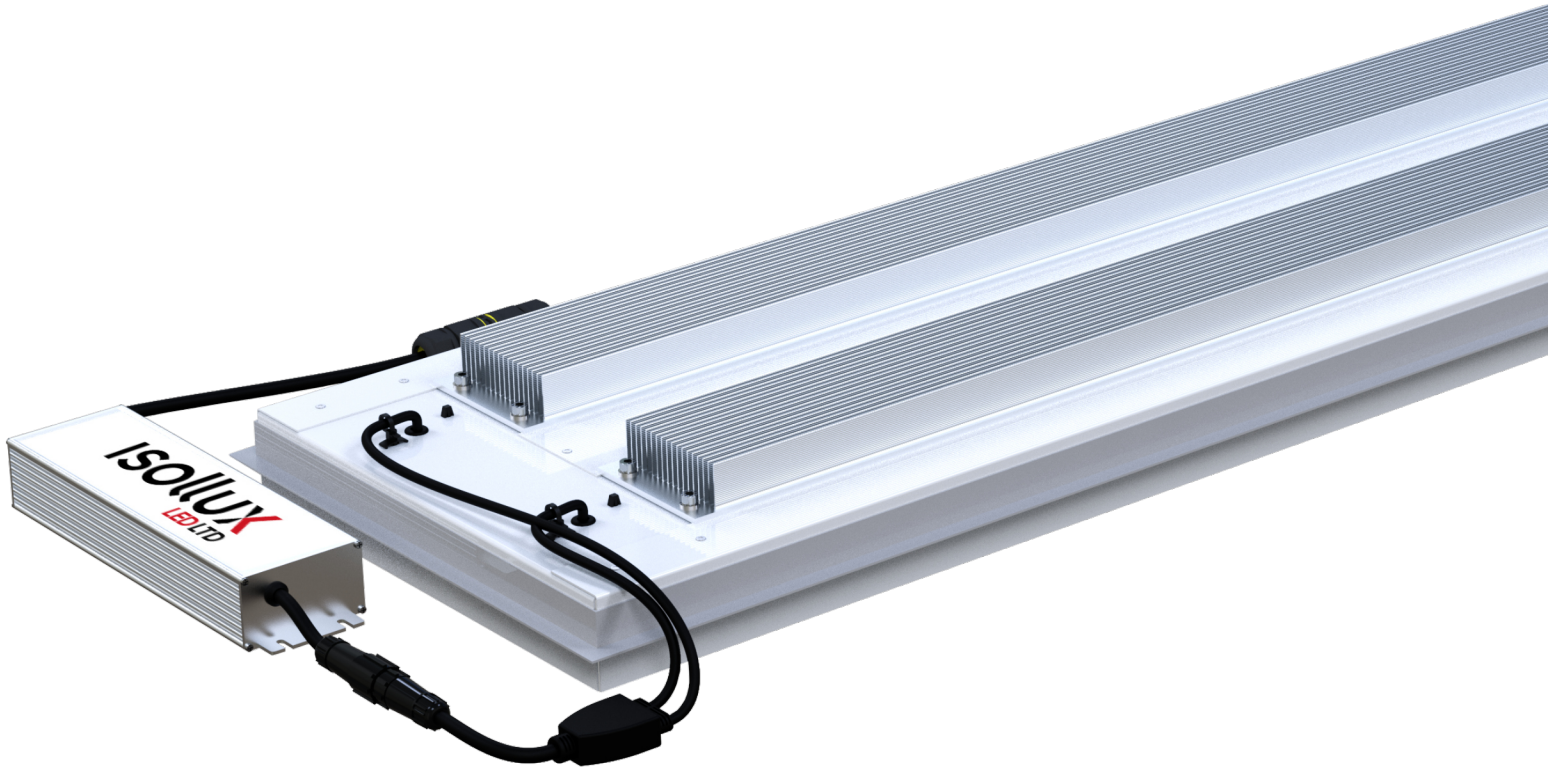


isollux™

Intelligent Lighting Solutions



Smart-Fit | **Light Plate CM**



Smart-Fit LED upgrade

The Light Plate CM is a retro fit, high performance LED light source and fire flashing. Typically used for recessed T5 1200 x 300/600 or 1500 x 300/600 enclosures. The product is custom sized at factory to sit over the original fitting once the original electrical components are removed, leaving the original flashed frame open at the top with the sealed lens below. Light Plate is then flashed directly over the opening.

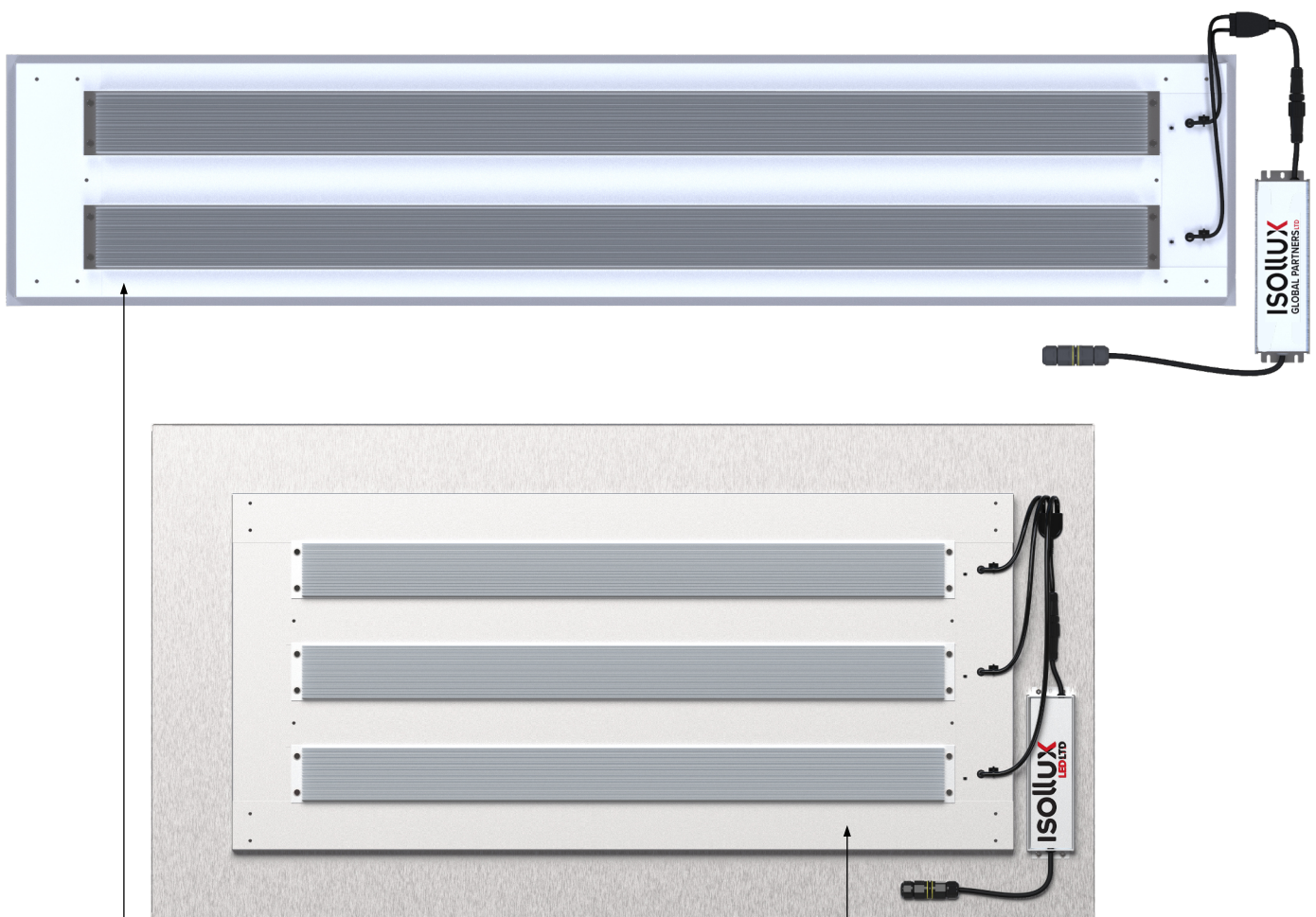
L90 > 100,000 Hrs | 150lm/W



Custom fitted solution

There are few restrictions to the size of the products we can supply, as standard the design features three LED arrays powered to 185W with the HE variant providing 27,000lm x LLF of the original fixture. Final performance will depend on the condition of the legacy lens and the proximity of the LED light source.

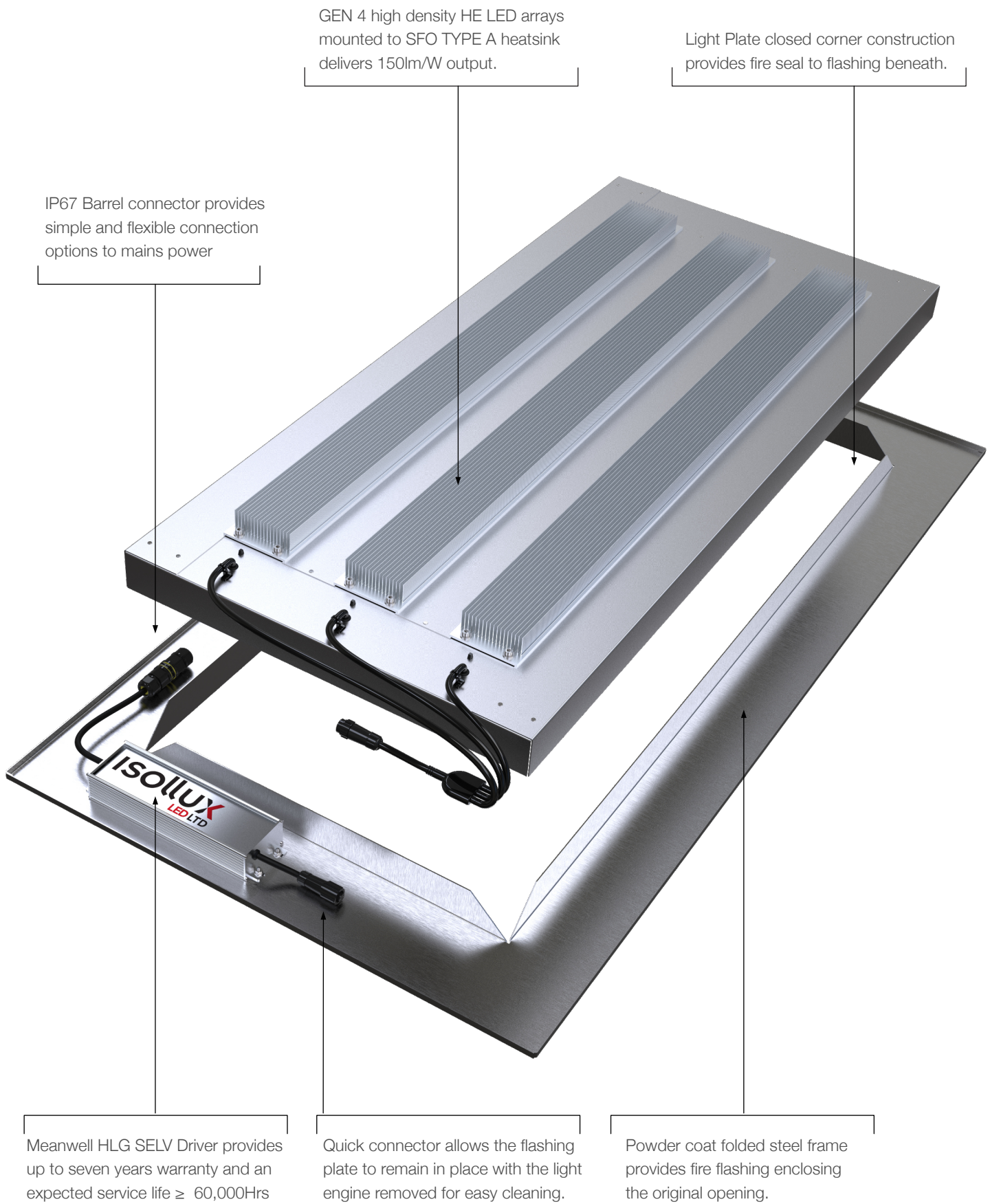
As a SELV LED light source with independent driver, we have considerable freedom to adapt the concept to your needs, subject to both your operational requirements and architectural detail. Provide us with original specifications where possible, or photos and site measurements where not and we will work with you to confirm the final detail*.

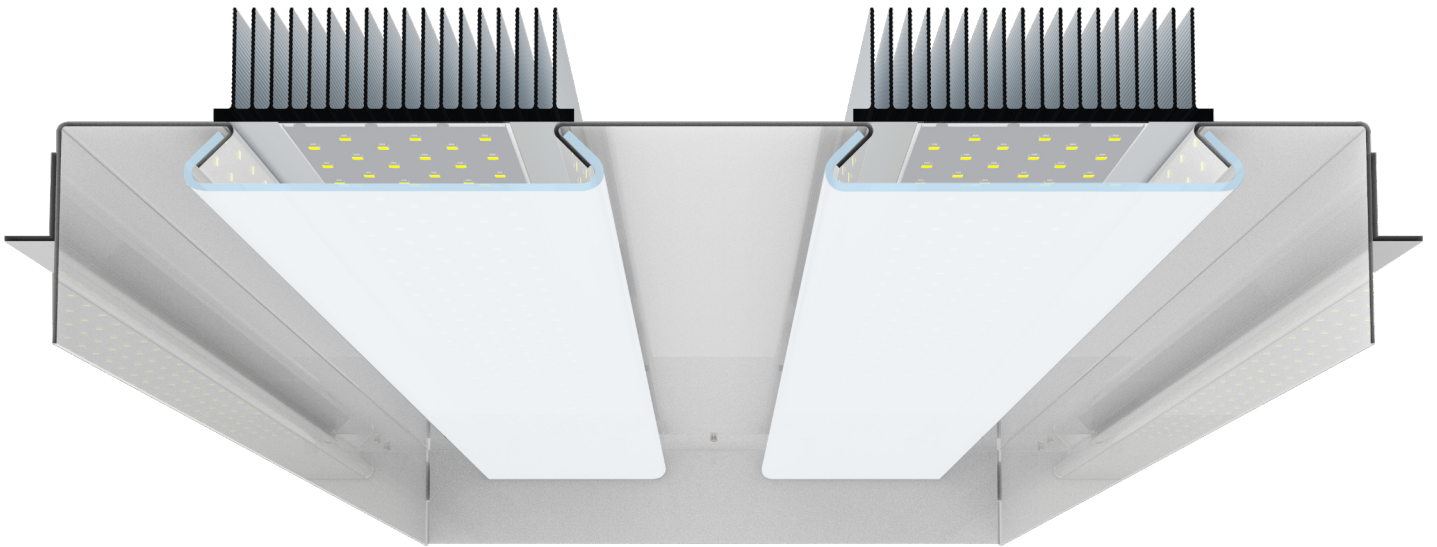


Flashing tray is sized to fit over the original luminaire to ensure a fire safe solution which can be screwed or riveted into position

Standard configuration includes three LED arrays, with the box sized to suit the footprint of the original luminaire

* CAD fees may apply for shaped enclosure and subject to MOQ





Primary Optics

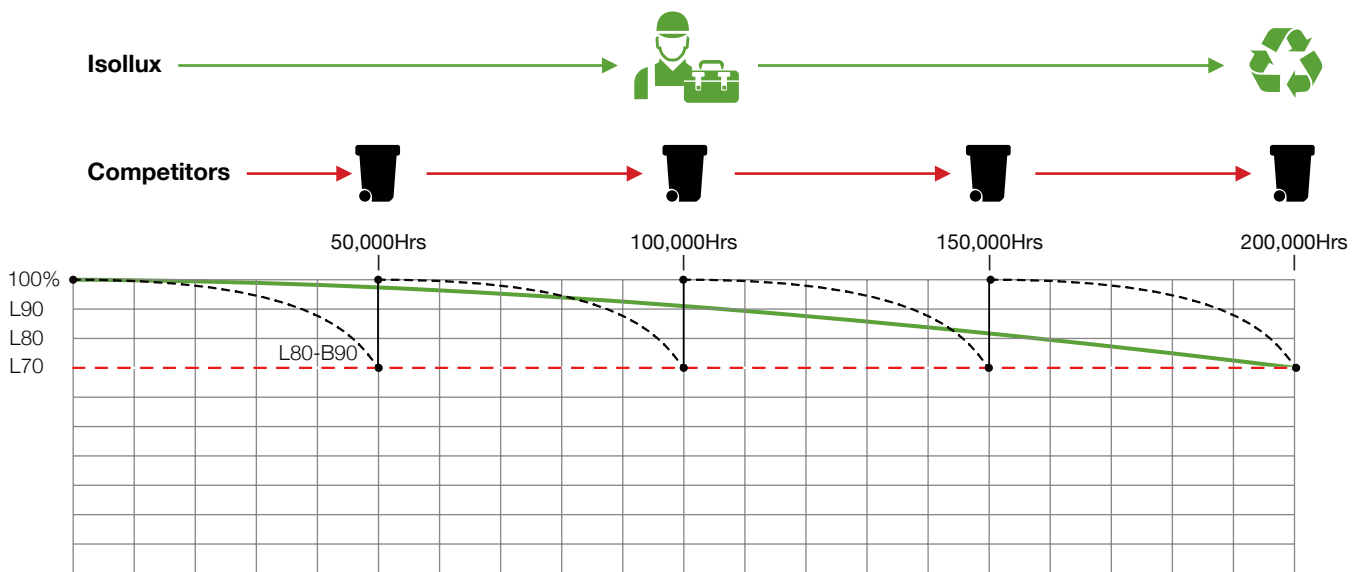
The primary lens protects the LEDs against accidental damage during installation, broadens and diffuses the light source prior to the legacy lens to assist in the elimination of spotting and glare.

- ▶ Eliminates dangerous reflections and glare
- ▶ Reduces work place accidents
- ▶ Eliminates shadows around complex machinery and aerial clutter
- ▶ Soft light + precise colour rendering improves visual acuity
- ▶ Improves accuracy during inspection and sanitation

Maintain and save

Maintenance makes sense, financially, ecologically and practically. Our team can explain the true cost of short term thinking and help your business reduce costs and achieve a sustainable future, with regular maintenance of your fitting.

- ▶ Reduces total cost of ownership maximising ROI and NPV
- ▶ Reduces land fill, manufacturing and supply related carbon footprint by up to 400%
- ▶ Delivers a longer practical performance life (L90 >100,000 Hrs* - L70 > 200,000 Hrs)
- ▶ Supports planned and unscheduled maintenance to the maximum life of the fitting
- ▶ Minimizes downtime with easily maintained and replaceable parts
- ▶ Ensures continuity of fixtures on site
- ▶ Components easily dismantled at end of life for recycling



* HE Chipset L90 Lifetime calculated using 9,000hr independent LM80 photometry report, citing zero failures, using the Energy Star TM-21 protocol. Calculations are based on ambient temperatures of 25°C. With regular maintenance to keep heatsinks and vents clear from blockages. Assumes driver replacement as routine maintenance event at driver replacement at 60,000Hrs. Power tray replacement at schedule to suit customers lux requirements estimated $\geq 100,000$ Hrs

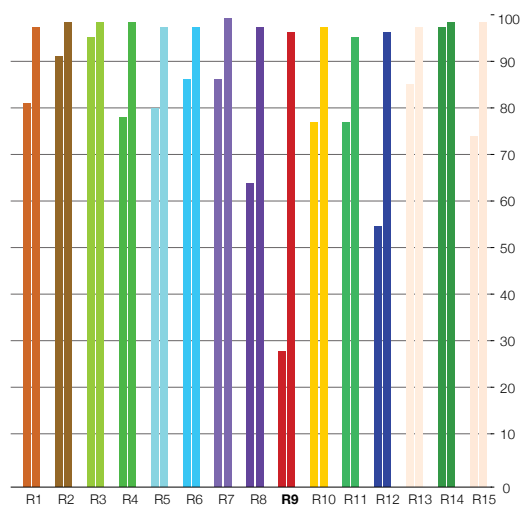


Everything looks better in colour!

Power to deliver Ra95 at engineering lux levels

Everything looks better in colour and our standard range of Ra85 Chipsets deliver retail grade performance with $R9 \geq 20$ across all standard colours from 2,700k-6,000k.

Upgrade to Ra95 and experience the ultimate in colour rendering to satisfy the most exacting quality controller or HDTV sports producer.



*Factor 0.92 at Ra95 and increase luminaire wattage accordingly to maintain required lux levels.

Light Plate Specifications

HE Chipset and Meanwell HLG series drivers

PRODUCT	PERFORMANCE			AMBIENT		DRIVER	INRUSH	MAX PSU 16A	WARRANTY
Model Number	Output	Power	Efficiency	Min*	Max	Function	Amps †	Type C Breaker	24/7 @ max (Ta)
150W									
LPCM-HE-XXX-150W-ND	22,500lm	150W	150lm/W	-30°C	50°C	Non Dim	50A	6 @ 230 Vac	5 YRS
LPCM-HE-XXX-150W-ND	22,500lm	150W	150lm/W	-30°C	50°C	0-10V	50A	6 @ 230 Vac	5 YRS
LPCM-HE-XXX-150W-ZB	22,500lm	150W	150lm/W	-30°C	50°C	0-10V	50A	6 @ 230 Vac	5 YRS
LPCM-HE-XXX-150W-DA	22,500lm	150W	150lm/W	-30°C	50°C	DALI	50A	6 @ 230 Vac	5 YRS
180W									
LPCM-HE-XXX-180W-ND	27,000lm	180W	150lm/W	-30°C	50°C	Non Dim	65A	6 @ 230 Vac	5 YRS
LPCM-HE-XXX-180W-ND	27,000lm	180W	150lm/W	-30°C	50°C	0-10V	65A	6 @ 230 Vac	5 YRS
LPCM-HE-XXX-180W-ZB	27,000lm	180W	150lm/W	-30°C	50°C	0-10V	65A	6 @ 230 Vac	5 YRS
LPCM-HE-XXX-180W-DA	27,000lm	180W	150lm/W	-30°C	50°C	DALI	60A	6 @ 230 Vac	5 YRS
240W									
LPCM-HE-XXX-240W-ND	36,000lm	240W	150lm/W	-30°C	50°C	Non Dim	65A	6 @ 230 Vac	5 YRS
LPCM-HE-XXX-240W-ND	36,000lm	240W	150lm/W	-30°C	50°C	0-10V	65A	6 @ 230 Vac	5 YRS
LPCM-HE-XXX-240W-ZB	27,000lm	240W	150lm/W	-30°C	50°C	0-10V	65A	6 @ 230 Vac	5 YRS
LPCM-HE-XXX-240W-DA	27,000lm	240W	150lm/W	-30°C	50°C	DALI	60A	6 @ 230 Vac	5 YRS
320W									
LPCM-HE-XXX-320W-ND	48,000lm	320W	150lm/W	-30°C	50°C	Non Dim	65A	6 @ 230 Vac	5 YRS
LPCM-HE-XXX-320W-ND	48,000lm	320W	150lm/W	-30°C	50°C	0-10V	65A	6 @ 230 Vac	5 YRS
LPCM-HE-XXX-320W-ZB	48,000lm	320W	150lm/W	-30°C	50°C	0-10V	65A	6 @ 230 Vac	5 YRS
LPCM-HE-XXX-320W-DA	48,000lm	320W	150lm/W	-30°C	50°C	DALI	60A	6 @ 230 Vac	5 YRS

(X) Correlated Colour Temperature options include: 4000°K **(4)** | 5000°K **(5)** | 6000°K **(6)**

(YY) Ra (CRI) Options include Ra85 **(85)**, Ra95. **(95)** Example: 5,000k Ra85, XXX = 585

ND Non dimming (Vo to reduce output) | **DM** 1-10V Dimming | **ZB** 1-10V Dimming (Excludes sensor)* | **DA** DALI

† In rush current is provided as a guide only and may change subject to final specification.

*At extreme temperatures condensation may arise from legacy lens and enclosure



Contact: Chris Wheatley

Mobile: + 64 21 343 456

Telephone: + 64 9 446 0822

E.mail: chris.wheatley@isollux.com

Regional Authorised Global Partners can be found in the following locations

Sydney – Australia | Fresno – USA | Hong Kong – China | Jaingxi – China